

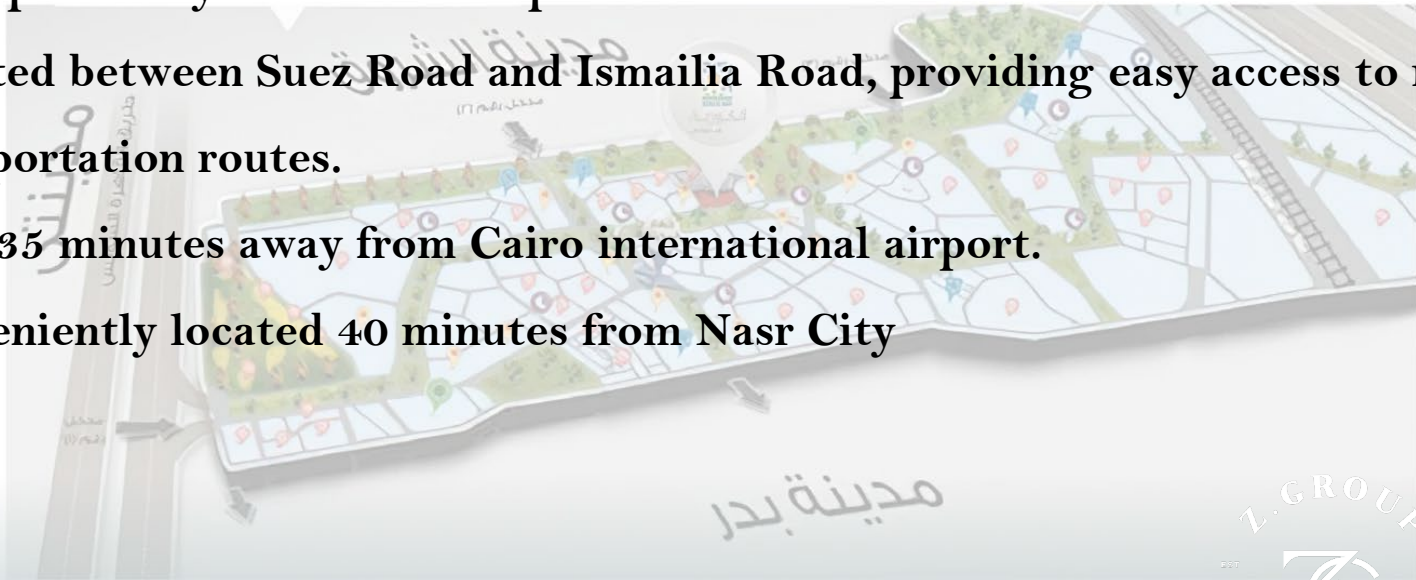


**Building 78 - New Heliopolis**

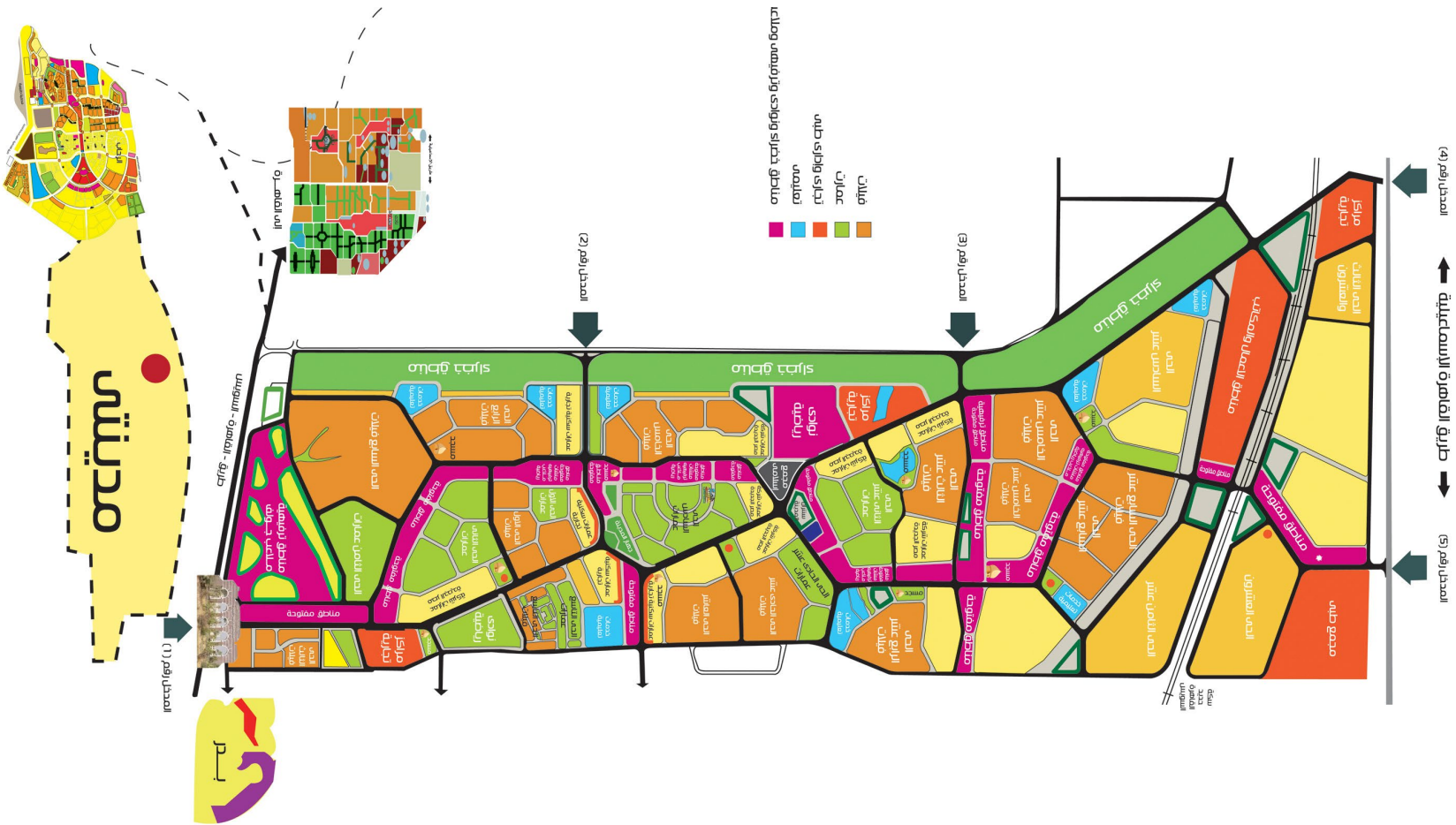
# Why New Heliopolis ?

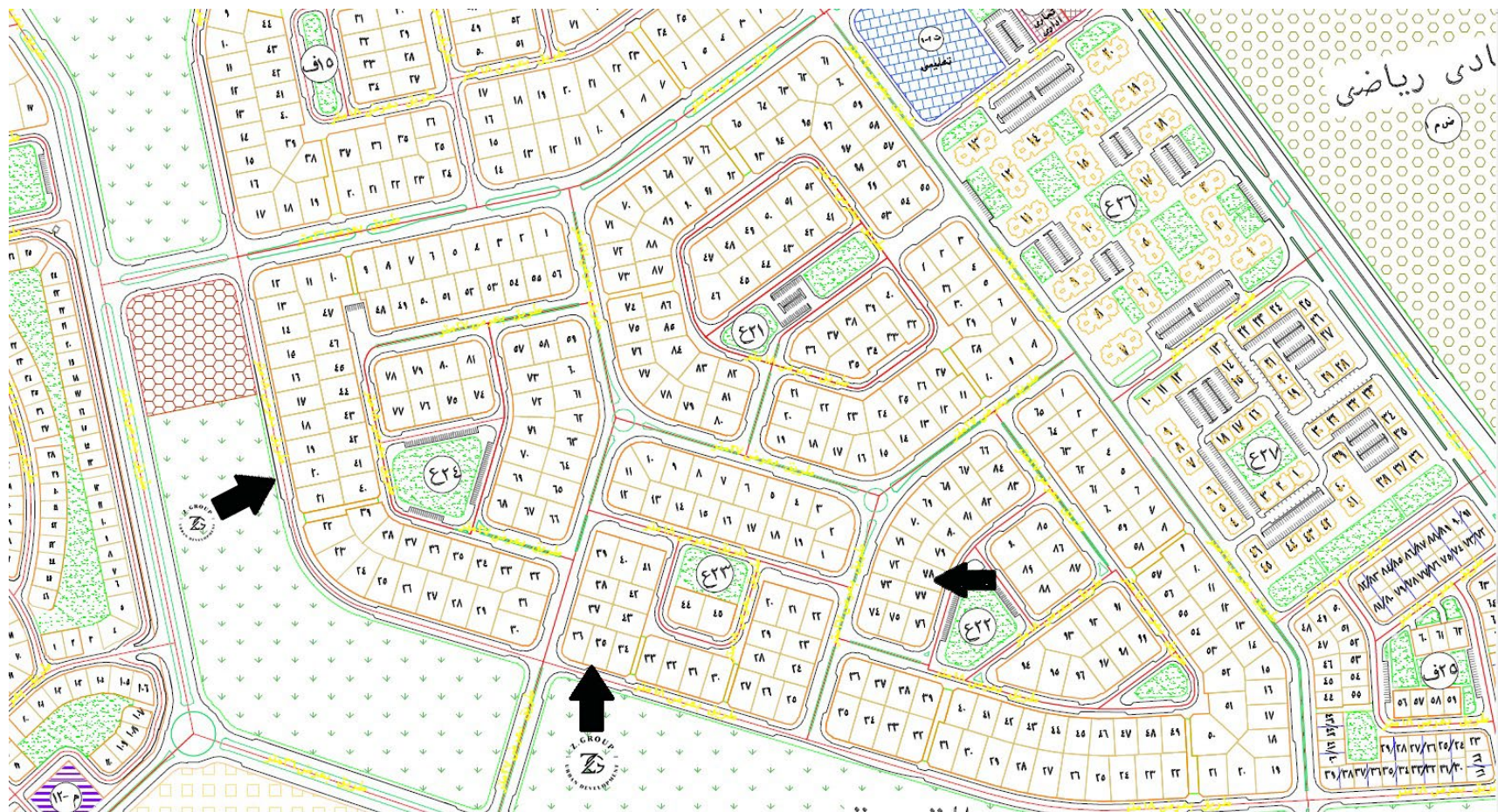
## مدينة هليوبوليس الجديدة

- Close proximity to the New Capital.
- Situated between Suez Road and Ismailia Road, providing easy access to major transportation routes.
- Only 35 minutes away from Cairo international airport.
- Conveniently located 40 minutes from Nasr City









PLAN DEVELOPME



**Building 78 - New Heliopolis**

# Building 78

## 🌟 Highlights:

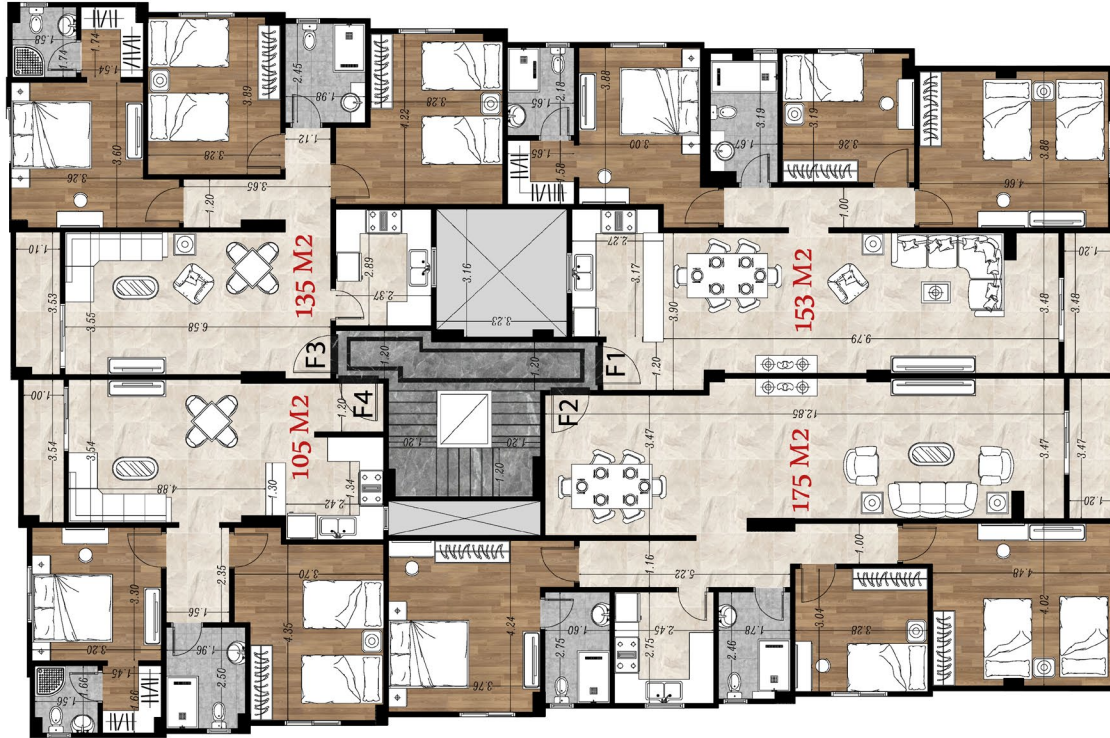
- \* Prime location
- \* Spaces from 105 sqm to 190 sqm
- \* Unique and captivating designs
- \* Convenient elevators
- \* Individual utilities meters
- \* Delivery date: 2026

# GROUND FLOOR



**Building 78 - New Heliopolis**

# TYPICAL FLOOR



**Building 78 - New Heliopolis**